

Project The Community Hall

P.O. Box 265, Islesboro, ME 04848

School Opens September 3rd!
Islesboro Community Center
Welcomes grades K-4

You have to see this
wonderful building
in person to appreciate
its accessibility and
versatility. We invite
you to inquire about
a personal tour before
you leave the island
by calling Priscilla Fort
at 734-8281.

Islesboro Community Center, Inc.

Board of Directors:

Janet R. Anderson, *secretary*
Martin Andrucki
Priscilla Fort, *chair, development*
Ed Girvin, *member emeritus*
Edie Konesni, *co-chair*
Nancy Krusell
John Mitchell, *co-chair and treasurer*
Lisa Satchfield
Donna Seymour
Fred Thomas

The Zone Committee:

Janice Bethune
Betty Boucher
Betha Howell
Nancy Krusell, *chair*
Melissa Olson
Cindy Satchfield

Executive Director
Nora Hayes Eldredge

Leadership Gift Committee

Chris Allen
David Blanton
Ellie Caulkins
Betsy Cohen, *co-chair*
Darrell Crate
Peter Haffenreffer
Sue Hatch
James Houghton
Gladstone Jones
Edie Konesni
Dudley Ladd, *co-chair*
Dana Mead
Russ Reynolds
Bill Rogers
Dan Thorne

Project The Community Hall

P.O. Box 265, Islesboro, ME 04848

207. 734. 8200

hall1860@gmail.com

Project The Community Hall

Under the auspices of the Islesboro Community Center, Inc

August 2009



Board Expands Financial Management Team As Capital Campaign Nears Conclusion

– Dana Mead to Serve as Chair –

The Board of the Islesboro Community Center has established a new Ad Hoc Committee on Financial Management to help bring the Community Hall Project to completion.

The committee will work with the Board on fundraising, financial reporting and control, and operations. With the Community Center building just weeks away from opening, completion of the capital campaign and establishing a solid management system for operating the Community Center in the future is imperative.

The members of the committee are Edie Konesni and John Mitchell (the co-chairs of the Board), Chris Allen, James Houghton, Dudley Ladd, Bill Rogers, and Dana Mead. Mr. Mead will chair the committee.

“We welcome the expertise and support of so many representatives of the island’s summer community as they join us in this effort,” said co-chair John Mitchell. “In particular we appreciate their years of experience in overseeing the financial operations of other non-profit organizations.”

This ad hoc committee will work in conjunction with the development and lead gift committee and will operate as a committee of the Board.

Photo: Dana G. Mead, Chairman of the Corporation of MIT, the Institute’s governing body, and former Chair and CEO of Tennaco, a \$30 billion conglomerate with 120,000 employees in 29 countries, working in natural gas pipelines, farm and construction equipment, chemicals, packaging, auto parts, and shipbuilding. He served on the board of Zurich Financial Services where he chaired the compensation committee for over a decade, chaired the audit committee of Nat West (NY), and currently serves as chair of the compensation committee on Pfizer’s board, which he joined in 1997. Mr. Mead, a long-time National Governor of the Boys & Girls Clubs of America, will serve as chair of the ad hoc committee on financial management for the Islesboro Community Center as it winds down its capital campaign and prepares to start operation as a full-time community facility.

Goals of the Project

The goals of the Community Hall Project will guide Executive Director Nora Eldredge and her program committee as they plan activities and events throughout the year. All goals follow from the stated mission of the new and renovated Community Center “to support and nurture the sustainability of the Islesboro community.” The basic premise from inception has been to serve the following goals:

- **Re-establish the Community Hall as Islesboro’s primary gathering place**
An old friend returns to the heart of our community and takes on her new expanded role as Islesboro Community Center
- **Improve health and fitness**
Group and individual fitness and exercise programs, a fitness center furnished with more than a dozen exercise stations for physical therapy, for post-op rehabilitation, and for just staying fit
- **Support Islesboro’s children**
A safe and versatile youth center with kitchen and restroom and dedicated spaces for after-school and weekend enrichment and recreation – the space which for this academic year will be used by students in Grades K- 4
- **Provide greater access to the performing and visual arts**
Stage venue and sufficient seating for year-round community theater productions, sufficient space for exhibitions by local and visiting artists, music performances, seasonal concerts; a sound-proof music room for lessons and private practice
- **Stimulate and broaden our minds**
A variety of heated comfortable spaces for lectures, seminars, debates, classes for adults, training programs, and film series with discussion groups
- **Promote togetherness and personal growth**
The Main Hall with its adjacent kitchen for large events and social gatherings; the informal and comfortable Café with free Internet access; meeting rooms for classes and workshops of all sizes
- **Serve other island-based organizations**
Year-round space and resources to share in collaboration with the residents of the Boardman Cottage, the ladies of the Sewing Circle for their annual Fair, Big Tree Boating program with sailing films and lectures, special events for the little people in the Islesboro Preschool, especially in inclement weather

July Open House Gave Community "Just a Peek"



More than 200 visitors braved the rainy skies and muddy walkways to get a peek inside Islesboro's new Community Center for two lively hours on Thursday evening, July 16.

Visitors were greeted at the door by Eileen Boardman and AnnMarie Mouw and directed to sign the guest book. From the main lobby, guests took off on their own to see the various spaces.



Every corner of the two-story facility was filled with activity. Curious visitors found helpful hosts and information in each area of interest.

Executive Director Nora Eldredge encouraged guests to note in writing their specific ideas for future programs or to sign up as volunteers.



Arch Gillies gives the evening two thumbs up!

Thanks to site manager Pete Anderson's efforts, the on-going construction site was magically turned into a temporary but accessible public space full of possibilities. It's all on film, thanks to volunteer photographers Hank Conklin and Phil Seymour.

Kudos to a dozen volunteer bakers, who made it possible for visitors to enjoy delicious homemade refreshments in the island's long-awaited Internet Café.



In the Café

- Free Internet Access
- Hot and Cold Beverages
- Snacks
- Comfortable Seating
- Woodstove Warmth
- Outdoor Patio Seating
- Special Event Meals

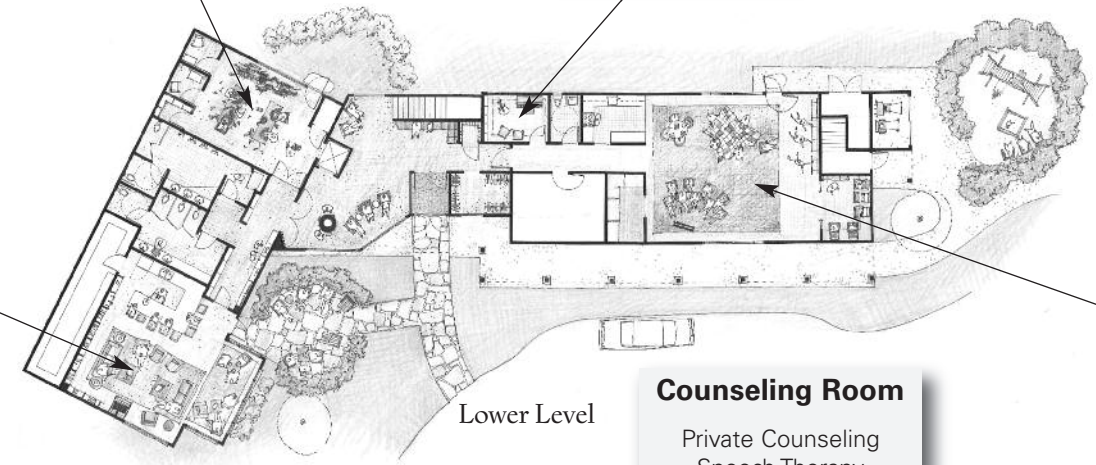
In the Messy Project Room
 "Splatter Kids" Art Studio for all ages
 Christmas Wreath Making
 Prop Construction for Theater Productions



In the Music Room
 "Music Together" Program for kids and their parents
 Instrumental Music Lessons
 Voice Lessons
 Private practice space (piano has been provided)



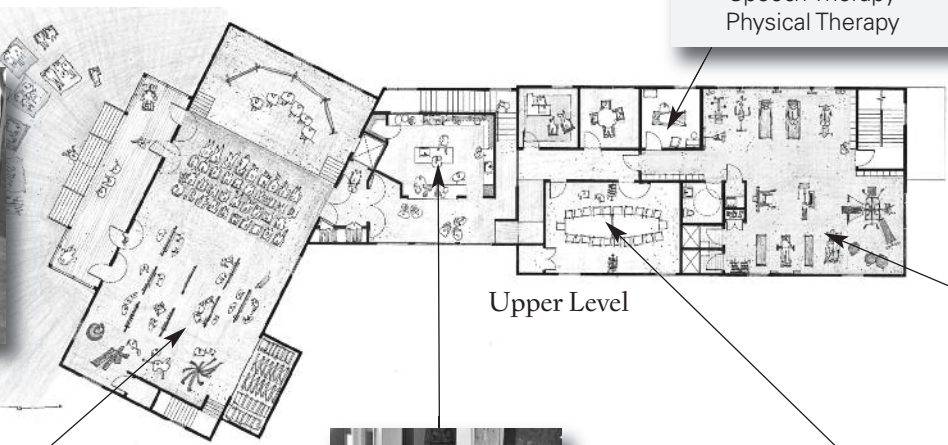
In The Zone (Youth Center)
 Easy Cooking Lessons
 Fun with Magic Cards
 "Nuts, Bolts, Volts" – Popular Mechanics for Kids
 Mainly GIRLS – Guided Reading and Discussion
 LIFE Skills – From Balancing Checkbooks to Changing Tires
 Sustainable Island Projects – Helping Island Non-Profits in Need
 4-H Group – Island Harvest Meal Project



Counseling Room
 Private Counseling
 Speech Therapy
 Physical Therapy



In the Main Hall
 Community Theater Productions
 Ballroom Dance Lessons
 Film Screenings
 Fencing Lessons
 Contra Dances
 Yoga and Pilates Classes
 School Drama Productions
 Mummers' Christmas Play
 Community Chorus Concerts
 Foreign Language Potluck Suppers
 Comedy Nights
 Summer Shakespeare Productions
 Private Party Rentals



From the Community Kitchen
 International Cooking Lessons
 Canning and Preserving
 Cake Decorating
 Sauces - Both Sweet and Savory
 Food Handling Safety Course
 Basic Nutrition Workshops

In the Fitness Center
 12 pieces of stationary equipment
 Visiting Trainer
 Shower Facility

In the Meeting Rooms
 Expandable Seating for Meetings Up to 24 people
 Breakfast or Dinner Meetings
 SAT Preparation Course
 Budgeting Classes for adults
 Legal Assistance Programs in Estate Planning
 Parenting Classes
 Drivers' Education Program
 WIC and Food Stamp Counseling

What's Can Happen at the Islesboro Community Center?